

## Lasistas 70CMR

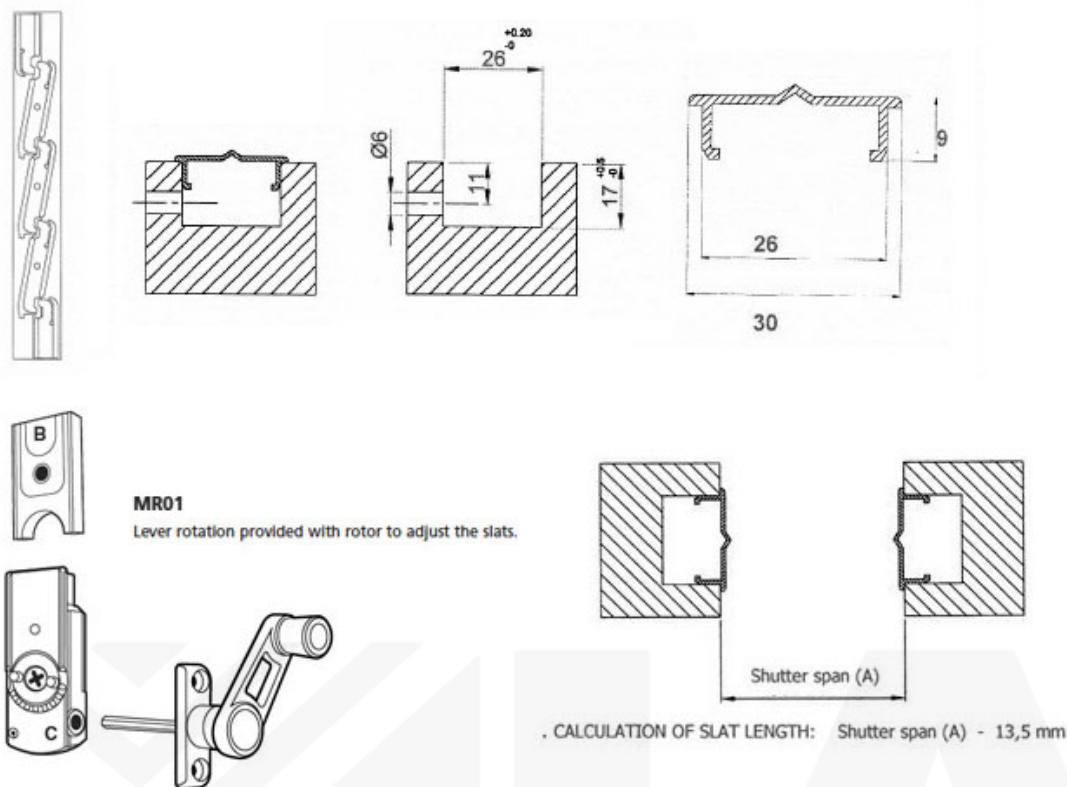
### TECHNICAL DETAILS

LASISTAS 70CMR - STANDARD	
DESCRIPTION PRODUCT	Turning louvers for 70 x 11 mm wooden-slats. <b>30 mm top/bottom extensions with adjustable slat-holders.</b> Embedded profile <b>Lever-rotation.</b>
MATERIAL	Profile in aluminium and slat-holders in PBT
TREATMENTS	Varnishing with polyester powder for outside.
COLOURS	Standard colours: black
DIMENSIONI PROFILO	26 x 11 x 1 mm.

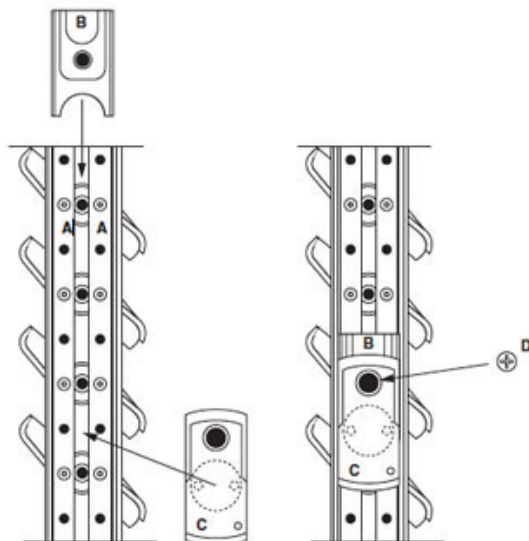
#### LASISTAS 70CMR assures:

- traditional shutter reproduction
- easy fitting by reverse-rotation accessory of slat-holders
- snap-shutting of slats
- screws fastening: central
- quality of product checked on each piece by our inward supervision.

#### Section profile of the slat



## Instructions of mechanism fixing for turning the slats.



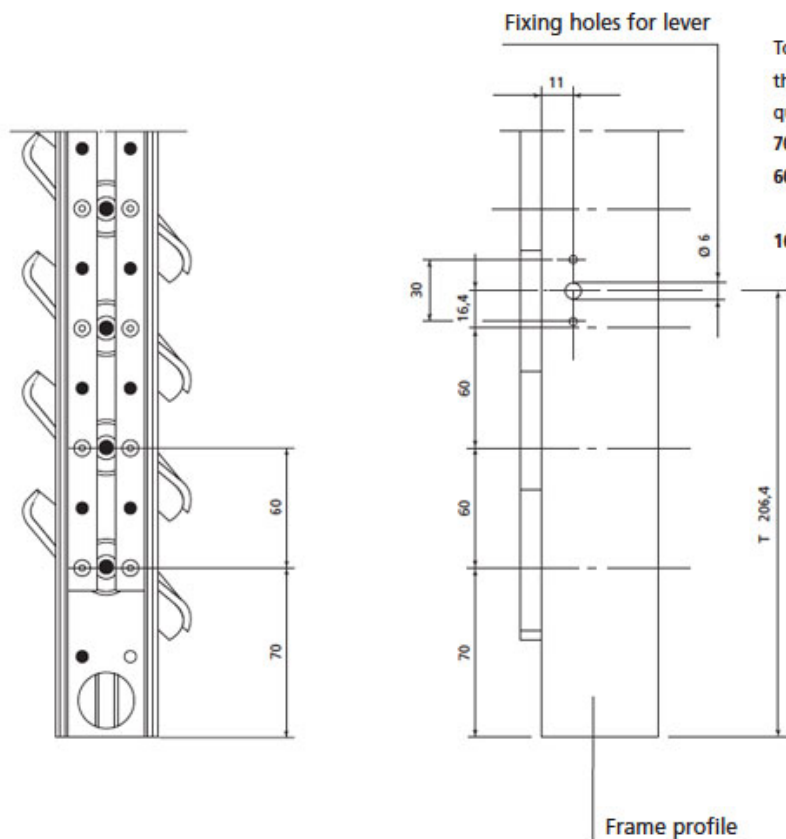
Fixing can be on both the right and the left.

- 1) Line up the holes of the two parallel rods (A) horizontally.
- 2) From the top insert the anchoring support (B).
- 3) Insert the two pins of the rotor (C) in the holes of the parallel rods (A) at the required height.
- 4) Bring the anchoring support (B) into contact to the mechanism (C) and screw together using the special locking screws (D).
- 5) Snap the slat-holder into the frame profile.

The mechanism for turning the slats consists of two parts: the anchoring support (B) and the rotor (C).

This makes it easy to reposition the mechanism without damaging the profile.

## To obtain the hole position of the lever into the frame profile.



To calculate the position of the holes for fixing the lever into the frame profile, add the following measurements to obtain quota (T):

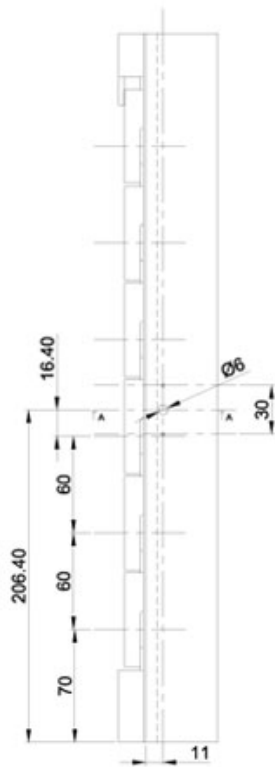
- 70 mm** measurement of the adjustable head.
- 60 mm** distance between two slats (once or more according to the height of lever position).
- 16.4 mm** distance between the centre of the slat and the lever axis (fixed measurement).

## How to assemble the PBT slat



Slip in the previously treated slat: this should be done gently, as interference could cause stiffening of the closing mechanism.

Once the correct position is reached, the slat-holder will automatically block the slat in position.



SLATS controls		PROFILE 26
		h mm
6	1	440
7	1	500
8	1	560
9	1	620
10	1	680
11	1	740
12	1	800
13	1	860
14	1	920
15	1	980
16	1	1040
17	2	1100
18	2	1160
19	2	1220
20	2	1280
21	2	1340
22	2	1400
23	2	1460
24	2	1520
25	2	1580
26	2	1640
27	2	1700
28	2	1760
29	2	1820
30	2	1880
31	2	1940
32	2	2000

