

Lumilas 70MR

LUMILAS 70 are the mechanism that allows to direct the slats from 70 mm in the shutters in aluminum.

Realized in extruded aluminium, black elettro-colour, can be supplied with a lever-rotation.

The shape of the profile and the slat-holder have been studied specially to keep out light completely. LUMILAS 70 is equipped whit accessory for rapid adjustment fitting slats.

TECHNICAL DETAILS

LUMILAS 70MR	
PRODUCT DESCRIPTION	Turning louvers for aluminium. 70 mm drop-shaped slats. 35 mm top/bottom extensions with adjustable slat-holders. Lever-rotation.
MATERIAL	Profile in extruded aluminium and slat-holders in NYLON.
TREATMENTS	Oxidation black elettro-colour.
PROFILE DIMENSIONS	24.5 mm 32 mm 34,8 mm

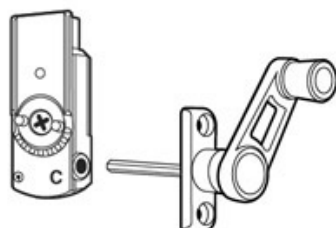
LUMILAS 70MR assures:

- traditional shutter reproduction
- easy fitting by reverse-rotation accessory of slat-holders
- snap-shutting of slats
- quality of product checked on each piece by our inward supervision.
- rapid adjustment

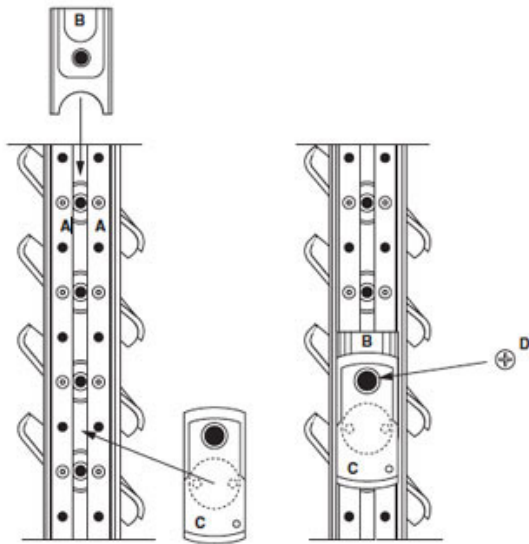


MR01

Lever rotation provided with rotor to adjust the slats.



Instructions of mechanism fixing for turning the slats.



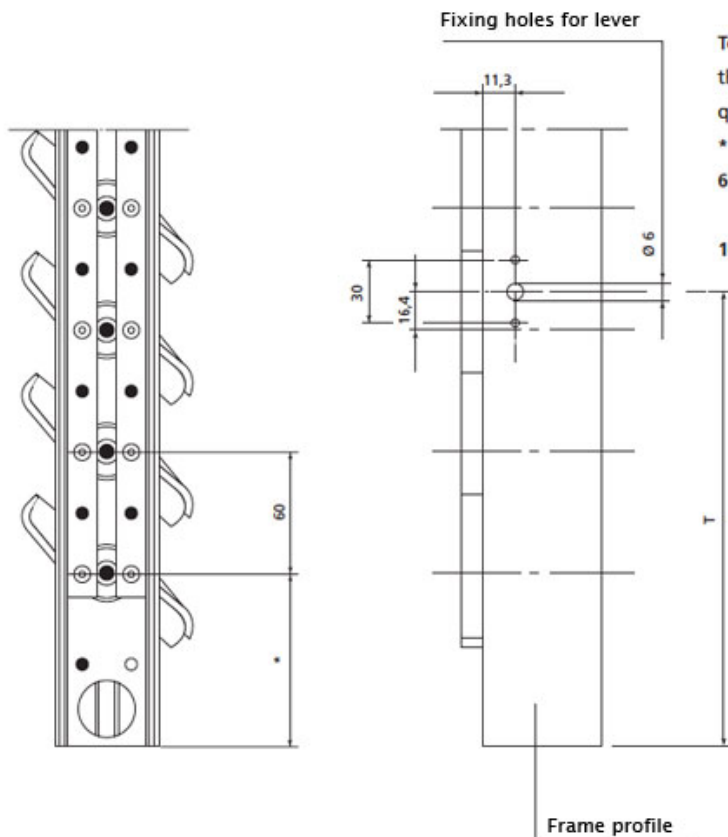
Fixing can be on both the right and the left.

- 1) Line up the holes of the two parallel rods (A) horizontally.
- 2) From the top Insert the anchoring support (B).
- 3) Insert the two pins of the rotor (C) in the holes of the parallel rods (A) at the required height.
- 4) Bring the anchoring support (B) into contact to the mechanism (C) and screw together using the special locking screws (D).
- 5) Snap the slat-holder into the frame profile.

The mechanism for turning the slats consists of two parts: the anchoring support (B) and the rotor (C).

This makes it easy to reposition the mechanism without damaging the profile.

To obtain the hole position of the lever into the frame profile.



To calculate the position of the holes for fixing the lever into the frame profile, add the following measurements to obtain quota (T):

- * mm measurement of the adjustable slat (variable).
- 60 mm distance between two slats (once or more according to the height of lever position).
- 16.4 mm distance between the centre of the slat and the lever axis (fixed measurement).

PROFILES



Dimension LUMILAS 70MR

ARTICLE	HIGH mm	n. SLATS	n. CONTROLS
L06.70.MR	450	6	1
L07.70.MR	510	7	1
L08.70.MR	570	8	1
L09.70.MR	630	9	1
L10.70.MR	690	10	1
L11.70.MR	750	11	1
L12.70.MR	810	12	1
L13.70.MR	870	13	1
L14.70.MR	930	14	1
L15.70.MR	990	15	1
L16.70.MR	1050	16	1
L17.70.MR	1110	17	1
L18.70.MR	1170	18	1
L19.70.MR	1230	19	1
L20.70.MR	1290	20	1
L21.70.MR	1350	21	1
L22.70.MR	1410	22	2
L23.70.MR	1470	23	2
L24.70.MR	1530	24	2
L25.70.MR	1590	25	2
L26.70.MR	1650	26	2
L27.70.MR	1710	27	2
L28.70.MR	1770	28	2
L29.70.MR	1830	29	2
L30.70.MR	1890	30	2
L31.70.MR	1950	31	2
L32.70.MR	2010	32	2